

TEXAS PNEUMATIC TOOLS, INC.

Service, Operation AND Parts Manual

TX-29RD-8/3 & TX-29RD-8/4



TX29# ROCK DRILL

TOOL
SPECIFICATIONS

MODEL #	WEIGHT	LENGTH	BORE	STROKE	BLOWS PER MINUTE	RPM	CHUCK SIZES	AIR INLET (NPT)	AIR COMSUMPTION*
TX-29RD	30 lbs. 14 kg	18.5" 468 mm	1.125" 54 mm	1.75" 45 mm	2450	250	7/8 x 4-1/4 in 22 x 108 mm	1/2 in 12 mm	56 cfm 1.6 m³/m

* ESTIMATED

www.airtools.com

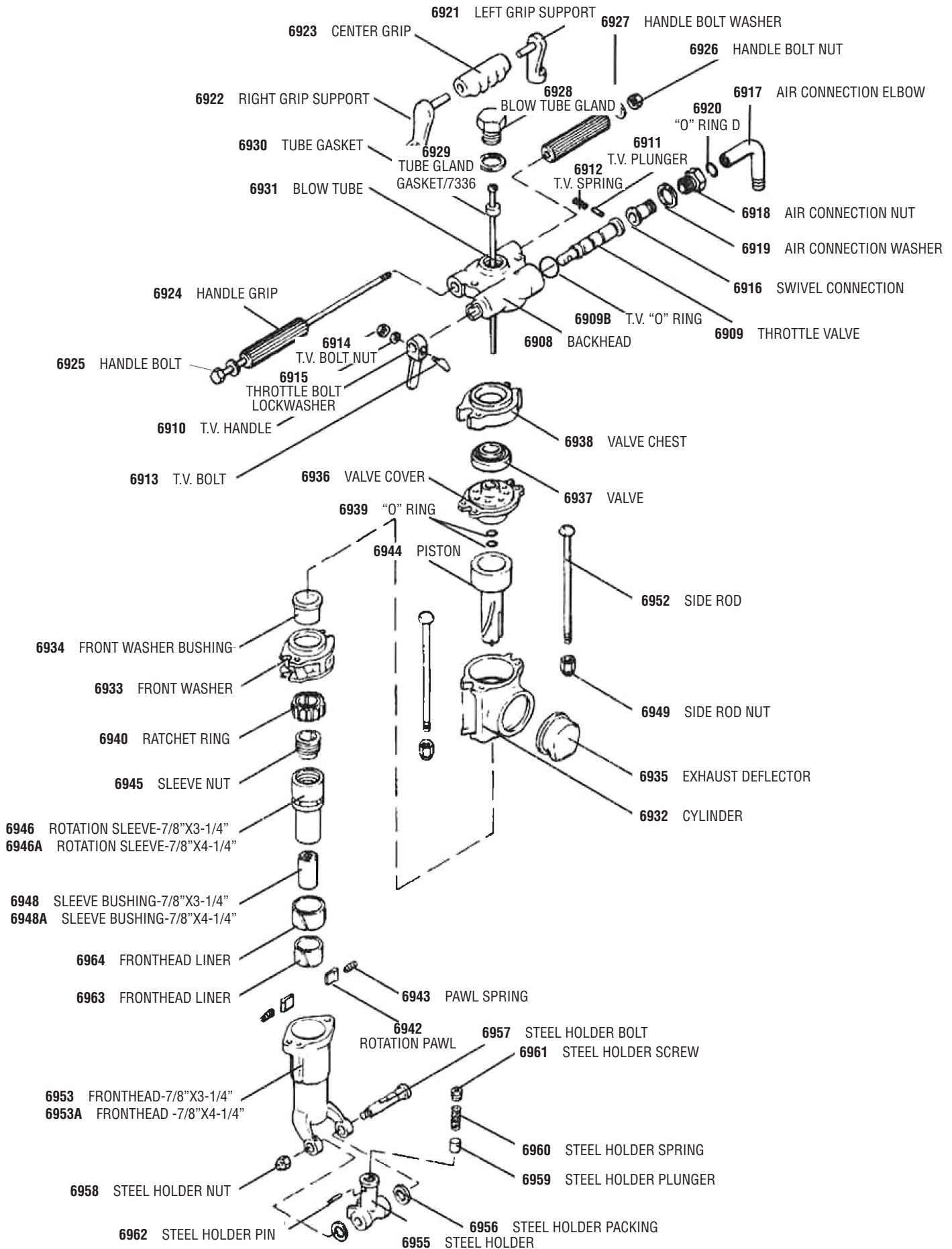
Email: tptinfo@airtools.com

TEXAS
1-800-231-9740
254-587-2533 (Int'l calls)

NEVADA
1-800-858-1222

VIRGINIA
1-800-626-1091

ROCK DRILL



SERVICE AND OPERATIONS

AIR SUPPLY

For efficient performance, a regulated supply of clean, dry air is required (90 psi at the tool). Most air tools will give superior service if the air is moisture free and lubricated, plus down time will be minimized. If the compressor is pumping excessive water, a cooler or moisture separator (TX-MSS-400 or TX-MSS-800) should be attached to the compressor or air line. A filter, pressure regulator and Texas Pneumatic in-line lubricator (TX-2L or TX-3L) should be part of the air line system to the tool. The air supply line should be a minimum 3/4" I.D. hose with no restrictive couplings or fittings in the hose line. A hose whip (TX-12HW-WCF or TX-15HW) is recommended to be used with the tool.

LUBRICATION

An in-line lubricator such as the Texas Pneumatic TX-2L or TX-3L is recommended. If an automatic lubricator is not used, it is recommended before using and after 1-2 hours use, to pour several drops of oil into the air inlet port. Texas Pneumatic Lubricating Oil (TX-PL001) or 5 wt. oil of good grade is recommended. A heavy oil will cause loss of power and efficiency. In the matter of preventative maintenance, Texas Pneumatic Tool Flush (TX-TF001) or similar solvent can be used to flush the tool. Add a couple of teaspoons to the air inlet port and operate the tool for a few seconds. It may be necessary to do this several times. The above should be done anytime the tool becomes sluggish or erratic or stops working. Flushing of the tool will most likely remove any foreign particles. After flushing and always before storage (this is most important if the air line has excessive moisture), the tool should be re-lubricated to prevent rust which will cause the tool to malfunction.

PREPARING FOR OPERATION

Texas Pneumatic Paving Breakers are Arrow Tools Chisels and Points. The TX-40PB-E has a bushing that is designed to use 1" x 4-1/4" Hex shank bits. Always use chisels or points with EXACT size to fit the bushing, and they should NEVER be modified in any way. Chisels or points should be checked for excessive wear, cracks or any other damage prior to each use. The Retainer Latch (43527) should also be checked for excessive wear and its retention ability prior to each use.

Before performing any maintenance or repairs on the tool, the coupler air supply must be disconnected. To remove or replace a chisel or point, the Retainer Latch (43527) must be pulled outward from the Fronthead (66421). The collar of the chisel or point can slide past the tab of the retainer once the retainer latch is pulled outward. Once the bit has been replaced, the retainer latch must be pushed back against the Fronthead. Make sure the collar of the chisel or point is kept in place by the retainer latch.

Once the proper chisel or point has been installed and the tool is ready for use, it is important to follow these safety precautions:

1. Wear eye and ear protection.
 2. Wear safety shoes and proper clothing.
 3. Keep both hands on the tool while operating.
 4. The tool should be kept firmly against the work surface when operating.
 5. Do not allow the tool to bounce against the work surface when operating.
 6. Failure to operate the tool firmly against the work surface (dry fire) will result in damage or breakage to the tool or chisel.
 7. Never point a tool at someone during operation.
 8. Disconnect air supply before replacing chisels or points.
-

ROCK DRILL

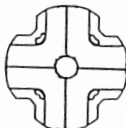
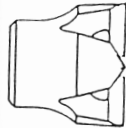
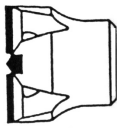
CARBON HOLLOW DRILL STEEL

HEX SHANK SIZE	LENGTH UNDER COLLAR	H THREAD 1"
7/8" X 3 1/4"	12"	RD783H12
	18"	RD783H18
	24"	RD783H24
	30"	RD783H30
	36"	RD783H36
	48"	RD783H48
	60"	RD783H60
	72"	RD783H72
7/8" X 4 1/4"	12"	RD784H12
	18"	RD784H18
	24"	RD784H24
	30"	RD784H30
	36"	RD784H36
	48"	RD784H48
	60"	RD784H60
	72"	RD784H72



ROCK DRILL BITS

CARBIDE ROCK BITS 1/4" INSERT		DEEP CARBIDE ROCK BITS 9/16" INSERT	
HOLE SIZE	H" THREAD	H" THREAD	D" THREAD
1 3/8"	CH1375	DCH1375	
1 1/2"	CH1500	DCH1500	
1 5/8"	CH1625	DCH1625	
1 3/4"	CH1750	DCH1750	
1 7/8"		DCH1875	
2"	CH2000	DCH2000	
2 1/4"		DCH2250	
2 1/2"		DCH2500	
3"		DCH3000	
			DCD3000 SPC. ORD.



W H I R L I B I T S

HOLE SIZE	HOLE DEPTH	7/8" X 3 1/4" SHANK	7/8" X 4 1/4" SHANK
1/2"	8"		
1/2"	10.5"		
5/8"	6"	W7836256	W7846256
5/8"	8"		
5/8"	9"	W7836259	W7846259
5/8"	12"		
5/8"	14"	W78362514	W78462514
5/8"	18"		
5/8"	20"	W78362520	W78462520
3/4"	6"	W7837506	W7847506
3/4"	8"		
3/4"	9"	W7837509	W7847509
3/4"	12"		
3/4"	14"	W78375014	W78475014
3/4"	18"		
3/4"	20"	W78375020	W78475020
3/4"	26"	W78375026	W78475026
7/8"	6"	W7838756	W7848756
7/8"	8"		
7/8"	9"	W7838759	W7848759
7/8"	12"		
7/8"	14"	W78387514	W78487514
7/8"	18"		
7/8"	20"	W78387520	W78487520
7/8"	26"	W78387526	W78487526
1"	6"	W78310006	W78410006
1"	8"		
1"	9"	W78310009	W78410009
1"	12"		
1"	14"	W783100014	W784100014
1"	18"		
1"	20"	W783100020	W784100020
1"	24"		
1"	26"	W783100026	W784100026
1 1/8"	8"		
1 1/8"	9"	W78311259	W78411259
1 1/8"	12"		
1 1/8"	14"	W783112514	W784112514
1 1/8"	18"		
1 1/8"	20"	W783112520	W784112520
1 1/8"	26"	W783112526	W784112526