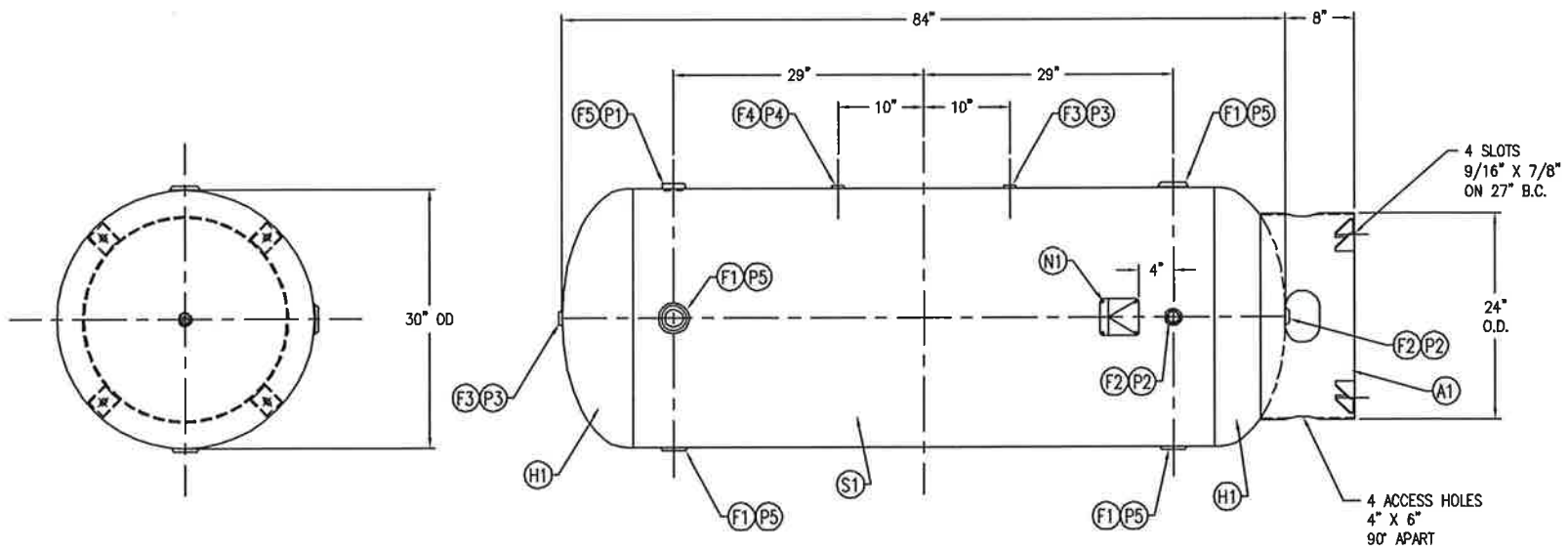


CODE/ADDENDA \_\_\_\_\_ APPROVED \_\_\_\_\_  
 RELEASED FOR PRODUCTION  
 Q.C. \_\_\_\_\_ DATE \_\_\_\_\_

FIND NO.	NPT SIZE
F1	2
F2	1
F3	1/2
F4	1/4
F5	1-1/2

NO.	QTY	PART NO.	DESCRIPTION
H1	2		HEAD: SA-414-G
S1	1		SHELL: SA-414-G
F1	4		FLANGE: 2 NPT RAD. SA181-70
F2	2		FLANGE: 1 NPT SA181-70
F3	2		FLANGE: 1/2 NPT SA181-70
F4	1		FLANGE: 1/4 NPT SA181-70
F5	1		FLANGE: 1.1/2 NPT RAD SA181-70
A1	1	A85002	BASERING ASSY FOR 30" TANK AP.G
N1	1		NAME PLATE: ASME / NB AP.G



SYM	DATE	BY	REVISION	APP	NOTES
A		EGB			
1		SN		TA	
2		JC		LB	
3		JC		JC	

SPECIFICATIONS	
O.D. 30	LGTH. 84
MAWP 200 PSI @ 400 F	SH. HD.
RT- MONT 'FØ PSI	GAL 240 S.A. 59
EXMT TEST	WT. 670# CU.FT. 32.16
XRAY	CORR ALW SH HD
CRN --	CODE ASME / NB
PER DATE OF DWG/LAST REV	
WELD DETAILS: M-1932	
STD. TOLERANCES (UNLESS OTHERWISE NOTED): M-2461	

**240ARV200** (3000)

VERTICAL AIR RECEIVER  
240 GALLON

DRAWN BY LB	DATE	SCALE: NONE
APP. BY AS	DATE	DRAWING NO. 302428