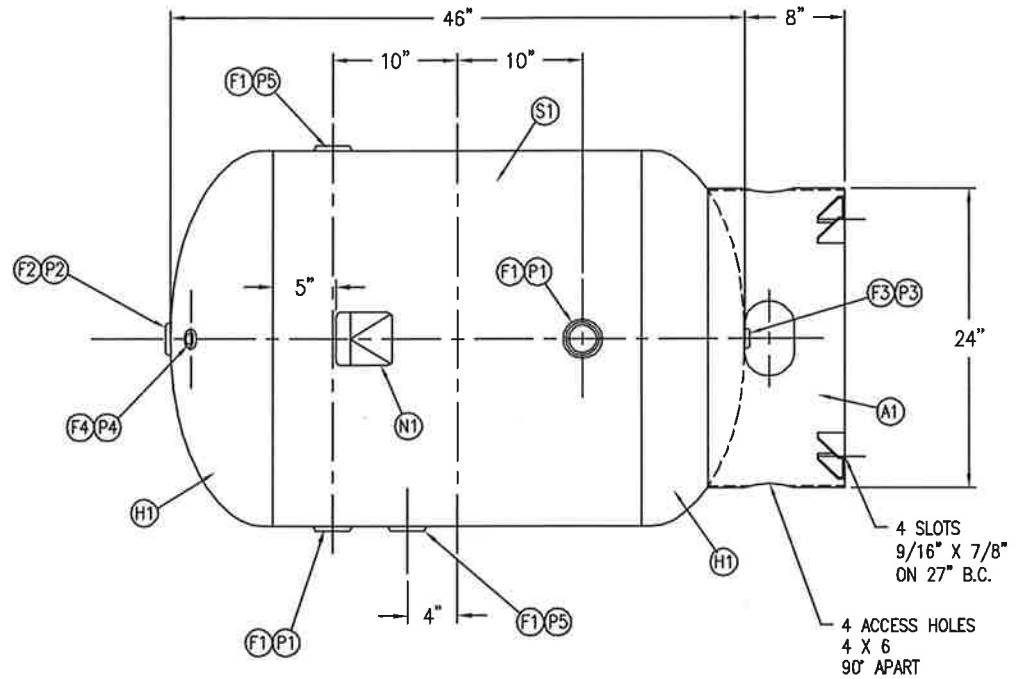
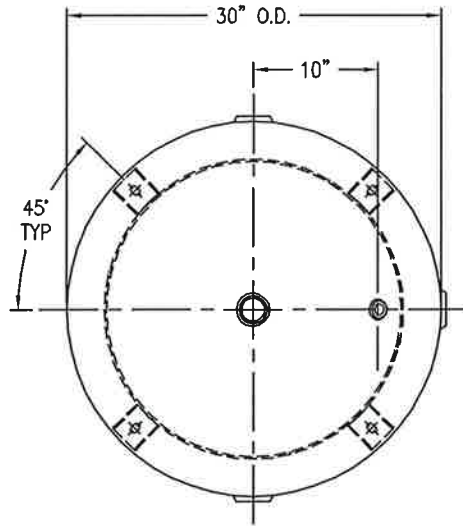


CODE/ADDENDA \_\_\_\_\_ APPROVED \_\_\_\_\_  
 RELEASED FOR PRODUCTION  
 Q.C. \_\_\_\_\_ DATE \_\_\_\_\_



| FIND NO. | QTY | DESCRIPTION                |
|----------|-----|----------------------------|
| F1       | 4   | F30318 2 NPT RAD. SA181-70 |
| F2       | 1   | F30316 2 NPT FLT. SA181-70 |
| F3       | 1   | F10250 1/2 NPT SA181-70    |
| F4       | 1   | F10180 1/4 NPT SA181-70    |

REF 263004600215  
35557

| SYM | DATE | BY  | REVISION | APP |
|-----|------|-----|----------|-----|
| A   |      | EGB |          | TA  |

NOTES

**SPECIFICATIONS**  
 O.D.: 30 LGTH: 46 SH: MAT'L:  
 MAWP: 200 PSI @ 400° F HD: MAT'L:  
 RT MDMT-20° F @ 200 PSI GAL: 120 SA: 33 ft<sup>2</sup>  
 EXMT: TEST PSI WT: 368# CU.FT: 16  
 X-RAY: CORR ALW: SH HD  
 CRN F0628.1C CODE: ASME / NB  
 PER DATE OF DWG/LAST REV

WELD DETAILS M-1932  
 STD. TOLERANCES (UNLESS OTHERWISE NOTED) M-2461

**120ARV200** F:3000

**VERTICAL AIR RECEIVER**  
120 GALLON

|                |      |                              |
|----------------|------|------------------------------|
| DRAWN BY<br>LB | DATE | SCALE: NONE                  |
| APP. BY<br>AS  | DATE | DRAWING NO.<br><b>302423</b> |