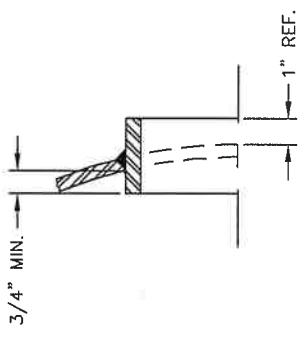
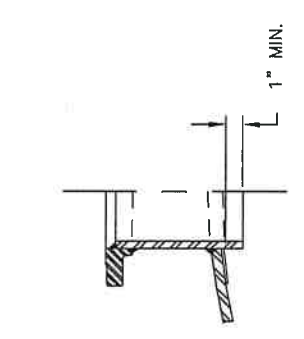


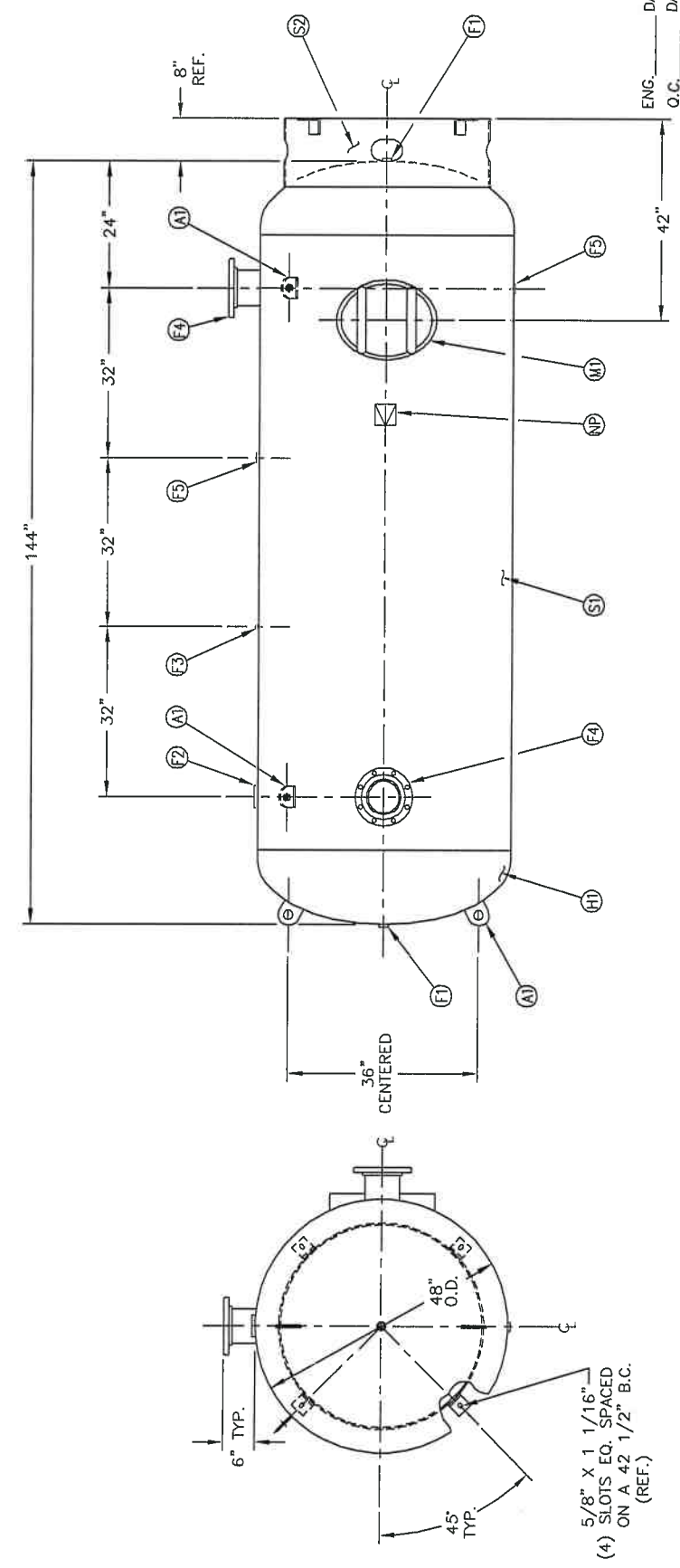
NO.	QTY	DESCRIPTION	SPEC	SUB-DWG.
S1	1			
H1	2			
F1	2	1 NPT 1500# FLAT FLANGE	SA-181-70	
F2	1	3 NPT 3000# HALF COUPLING	SA-105	
F3	1	1/4 NPT 1500# FLAT FLANGE	SA-181-70	
F4	2	6" 150# ANSI RF.SO. FLANGE	SA-105	
F4	2	6" SCH.120 PIPE X 7 1/2" LONG	SA-106-B	
F4	2	.134 X 8 5/8" O.D. X 6 5/8" I.D. BACKING RING	C1008/SA-36	
F5	2	1 NPT 1500# RADIAL FLANGE	SA-181-70	
M1	1	12" X 16" X 1" X 4" 300# MANIWAY	SA-106-C	A85015
A1	4	1/2" X 4" X 4" STANDARD LIFT LUG		A85008
S2	1	STANDARD 8" SKIRT & CLIP ASSY. FOR 48" DIA. TANK		
NP	1	ASME DATA PLATE	C1010	



MANWAY DETAIL



6" NOZZLE DETAIL



5/8" X 1 1/16"  
(4) SLOTS EQ. SPACED  
ON A 42 1/2" B.C.  
(REF.)

STM	DATE	BY	REVISION	APPROVED	REV.	NOTES	SPECIFICATIONS
1		AW		JR			O.D. 48" LGH. 144" SH. MWP 200 PSI @ 400 °F HD. RT- ADMT -20 °F @ 200 PSI GAL. 1060 SA. 160.54 WT. 2350# CUFT. 139.65 EXMT U200(I) TEST CORR ALW SH HD XRAY --- CODE ASME SECT.VIII, DIV.1 CRN --- PER DATE OF DWG/LAST REV
2		BAK		ANA			
3		JC		JC			

SCALE: NONE	DRAWING NO.
48" X 144" VERT.	STANDARD AIR RECEIVER
DATE	DATE
DRAWN BY	DATE
APP. BY	DATE
CH. BY	DATE

WELD DETAILS: M-1932	PER DATE OF DWG/LAST REV
STD. TOLERANCES (UNLESS OTHERWISE NOTED): M-2461	

ENG. DATE  
O.C. DATE